



The Beam

Journal of the New Jersey Lighthouse Society, Inc.

Number 46

December 2001

A Visit to Door County

Story and pictures by: Robert Gurskey

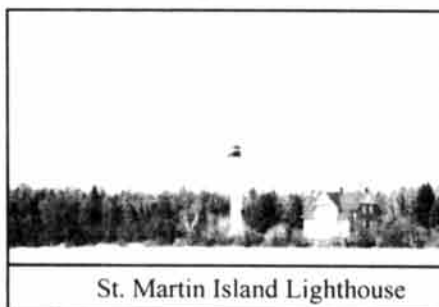
With a total of ten lighthouses, Door County, Wisconsin claims to have more lighthouses than any other county in the United States. In honor of this claim, for the past eight years, the Door County Maritime Museum has sponsored a "Lighthouse Walk" on the third weekend of May. Various lighthouses, which are not normally open to the public, are available for viewing on this weekend. I decided to take an early vacation and travel to the Midwest to participate in this year's walk.

I arrived at the Door County Maritime Museum in Sturgeon Bay on Friday, May 18th 2001. I had arrived in Milwaukee the previous afternoon and had worked my way north along the Lake Michigan shoreline visiting lighthouses along the way. The museum is in a fairly large building on the south side of the bay. A former Chicago harbor fireboat was tied up at the dock, and I discovered it was being used to give waterside tours to two lighthouses. Unfortunately, my plans did not give me an opportunity to sail upon this unique vessel. I did have to stop at the museum gift shop for postcards and this year's walk T-Shirt. My base of operations for the weekend was Bailey's Harbor. The village is located about midway between Sturgeon Bay and the tip of the Door County peninsula on the Lake Michigan side of the peninsula.

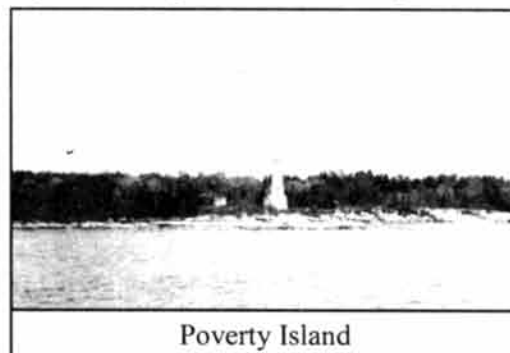
Saturday morning started with a cruise sailing from Gills Rock at the northern tip of the peninsula. I chose this privately sponsored cruise because it included two Michigan lighthouses that I would not have been able

to see otherwise. The cruise left the dock at 9:00 am and headed north. Our first close-up lighthouse was Michigan's St. Martin Island Light-house. This metal

tower with an exoskeleton, far different from the rear range lights of New Jersey, was built in 1905. The abandoned duplex keeper's home, oil storage building, and fog signal building were still standing next to the white tower.



St. Martin Island Lighthouse



Poverty Island

After passing some extremely small and low-lying islands, we reached Poverty Island, another isolated Michigan light station.

The 1874 brick tower and keeper's quarters are still standing, but the lantern room has been removed from the 60-foot tower. Our boat then headed south to Rock Island and we slowly passed Potawatomie Light (also spelled Potawatomie). Built in 1859, this two-story limestone house

(Continues pg. 2)

Pg. 1. _____ Door County
Pg. 2. _____ Updated Committee
Pg. 4. _____ Photo Contest, Hospitality
Pg. 5. _____ Membership
Pg. 6. _____ Activities

In
This
Issue

Pg. 6. _____ Challenge T-Shirt Offer
Pg. 7. _____ Light Bytes
Pg. 8. _____ Harbour Lights Visit
Pg. 10. _____ Tuckerton Seaport, Lens
Pg. 12. _____ Program Signals



From the Editor's desk.....

Some criteria for submissions for the Beam:

All articles are subject to approval by the Editor and the Executive Board. No Commercial advertisements are permitted. All articles are subject to editing due to size and content. Articles should be timely. Associated photos should be personal photos, clear, no larger than 5x7 or on disk. Articles may be submitted by mail, fax and preferably by email or floppy disk. In general, deadlines are six weeks prior to the NJLHS's quarterly meetings.

On behalf of the NJLHS Executive Officers, Board Members, Committee and Members, I would like to extend our condolences to all those families and friends who suffered a loss as a result of the terrorist attacks on the United States September 11, 2001

We would like to extend our wishes for a Happy, Holy Holiday Season and Peace for the New Year.
Joe & Carol

The Beam, the official journal of the New Jersey Lighthouse Society, Inc., is published quarterly, March, June, September and December. Membership dues are \$15.00 single and \$20.00 family, and are for the calendar year. Back issues are available free for members joining mid-year. All materials are copyrighted and cannot be borrowed or reproduced without permission of the New Jersey Lighthouse Society. The NJLHS - New Jersey Lighthouse Society, Inc., is a non-profit educational corporation (501c3).

Officers and Board Members

President	Tom Lavery	(732) 872-2966
1st Vice President	Yvonne Miller	(856) 797-2451
2nd Vice President	Bill Volpe	(732) 846-2196
Secretary	Cindy Mitzen	(908) 281-6879
Corres. Secretary	Betty Smith	(856) 546-7810
Treasurer	Debby Megonigal	(609) 268-4779
Board Member	Mary Beth Doherty	(973) 966-5573
Board Member	Al Smith	(856) 546-7810
Board Member	Elinor Veit	(609) 652-1876
Board Member	Ray Vliet	(732) 985-2624
Board Member	Barry Wood	(732) 431-9328

Committees

Activities Chair	Carole DiNapoli	(732) 297-4280
Historian	Jack Slavin	(856) 858-1956
Archivist	Barbara Pepe	(609) 208-9077
Hospitality Chair	Betty Smith	(856) 546-7810
Membership Chair	Mary Beth Doherty	(973) 966-5573
Newsletter Editor	Joseph A. Guchek	(732) 572-2615
Assistant Editor	Carol Guchek	(732) 572-2615
Program Chair	Yvonne Miller	(856) 797-2451
Publicity Chairs	Richard & Elinor Veit	(609) 652-1876
Ways & Means	Steve Martorano Sr.	(856) 456-3281

Society Address:

NJLHS, Inc.
P.O. Box 332
Navesink, NJ 07752-0332

NJLHS Web Site

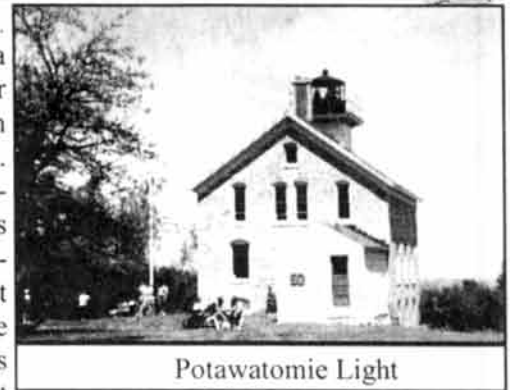
NJLHS E-mail address:
The BEAM E-mail address:
The BEAM Fax
NJLHS Announcements:

Newsletter Address:

Joseph A. Guchek
The Beam
16 Labakan Place
Highland Park, NJ 08904

<http://www.njlhs.burlco.org>
njlhs@burlco.org
njlhsbeam@prodigy.net
(732) 572-1033
(856) 546-0514

(Cont. from pg. 1) ... supports a wooden tower projecting from the second floor. Although passenger ferry boats travel to the island throughout the summer, the lighthouse is open rarely but always for the walk. We docked about a mile and a half from the lighthouse. A long walk through the woods brought me to the lighthouse where I ate my lunch. A local group is working to restore the lighthouse. First, I think, all the ladybugs have to be chased out. The lantern room was infested with them.



Potawatomie Light

The boat stayed at Rock Island for 90 minutes before journeying to our next lighthouse, the range lights on Plum Island. The rear range lighthouse is a white metal skeleton similar to Finns Point Rear Range light. A brick keeper's quarters is located near the rear range light. Sixteen hundred feet to the east, the current front range light is a modern metal tower. As the boat passed the range line, I could see the alignment of the two red lights. I also noticed that some trees have started to spring up in the pathway between the two lights. The final lighthouse of the cruise was the Pilot Island light, a two-story brick keeper's house with a short tower projecting from the roof. While the 1858 lighthouse seemed in sturdy shape, the fog signal building is missing a section of the roof. An interesting feature of the island is that all the trees on the half where cormorants nest were dead while the trees on the seagull side were thriving.

After docking back at Gills Rock at 4:00 pm I drove back to Bailey's Harbor to catch a shuttle bus to visit the Cana Island lighthouse. Cana Island is connected to the mainland by a short stretch of rocks, which depending on the water level in Lake Michigan could be two feet deep. This year the lake was low and the rocks were perfectly dry. The 1869 brick tower is attached to a one-and-a-half story keeper's quarters by a short sheltered passage. However the wind caused severe erosion of the bricks, so in 1902 the tower was encased in steel



Cana Island Lt.

(Continued on page 3)



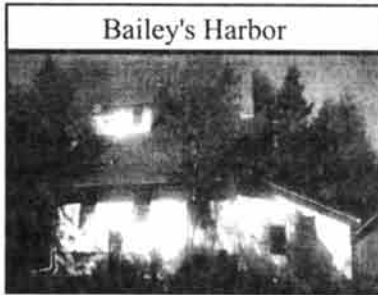
(Continued from page 2)

plates. While permitted to tour the keeper's house and oil storage building, the tower was closed. I was able to spy a third order Fresnel lens in the 81-foot tower. With such a long day in the sun, I experienced some sunburn on my hands and face that evening.



Bailey's Harbor

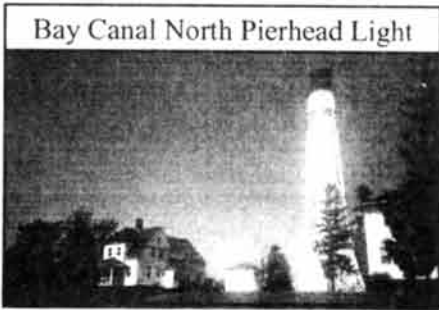
Sunday morning I had breakfast



Bailey's Harbor

in Bailey's Harbor before visiting the Bailey's Harbor range lights. The front range is an enclosed 21-foot wooden tower. The rear range is a one-and-a-half story wood frame house with a short tower projecting from the front of the house. There is a wood walkway connecting the two lights. Although the lights have been closed and in private hands since 1969, as part of the ownership of the lights, the range must be kept clear.

I then drove south to the Sturgeon Bay Coast Guard facility to visit two lights located on their property, the 1882 Sturgeon Bay Canal North Pierhead light and the 1899 Sturgeon Bay Ship Canal light.



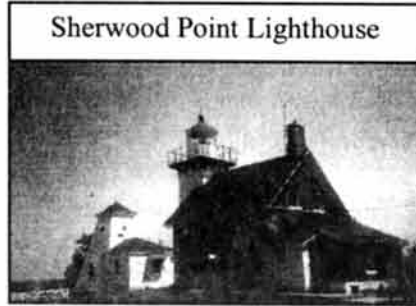
Bay Canal North Pierhead Light



Sturgeon Bay Ship Canal Light

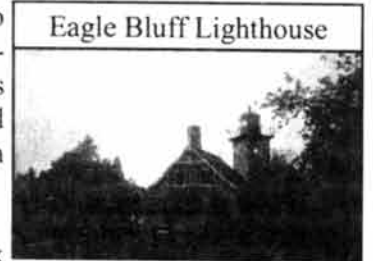
The ship canal connects the waters of Sturgeon Bay with Lake Michigan and shortens the trip to the waters of Green Bay. Mariners complained of the short visibility of the Pierhead light, so in 1899 a parcel of land on the Light Saving Station was used to build a 98-foot tall double wall steel tower. It was quickly discovered that

the lighthouse swayed so much as to make the light almost useless. In 1902 external legs were added to the base of the tower and this fixed the problem. Again I was not permitted into the tower, but I certainly got very close to it.



Sherwood Point Lighthouse

Next I drove through the city of Sturgeon Bay and northwest through the countryside to reach the Sherwood Point lighthouse. The Coast Guard owns the property and rents the keeper's quarters to Coast Guard personnel. The only time to visit the lighthouse from the land is during the "Walk". This lighthouse, built in 1883, marks the south side of the entrance into Sturgeon Bay from Green Bay. The square brick tower is attached to the front of the one-and-a-half story red brick keeper's house. A wood fog signal building sits on the cliff in front of the lighthouse.



Eagle Bluff Lighthouse

I then headed back across Sturgeon Bay and along the Green Bay side of peninsula to reach the Eagle Bluff lighthouse. This yellow brick lighthouse has its attached tower located in a corner on the building rather than usually found in the center of a wall. Located in a state park, the lighthouse has been restored and is fully furnished. Surprising, there is a brick privy on the property



Chamber's Island Lt.

At 3:30 pm I boarded for my second cruise to visit the lighthouse on Chamber's Island. In design, this lighthouse is very similar to Eagle Bluff except that it no longer has a lantern. The trip to the island took an hour and then a one-hour hike to the lighthouse. Fortunately this island is flat, unlike Rock Island. I ate my dinner at the lighthouse and took my photographs. Then we all hiked back across the island to the boat for our return cruise to Fish Creek.

Even though the brochure from the Door County Maritime Museum says that it is nearly impossible to visit all ten lighthouses in one weekend, because of the good weather and calm waters, I was able to accomplish it.



ARE YOU READY ForTHE MARCH, 2002 PHOTO CONTEST?

Al Smith

Yes, it is time to start getting out your photos, evaluating them (remember what Edd & Ted told you at the last photo contest?) and picking the ones (or one) that YOU believe will make YOU a member of The Winner's Circle.

Having seen the improvement from the Y2K visit by Edd & Ted, our Kodak Ambassadors, to the 2001 Photo Contest, I expect great things this year!

Since we have a system that seems to work pretty well, we will keep to it this year; same categories and everything.

So, we will have the following:

NJ Lights 5X7 and Larger

NJ Lights Smaller than 5X7

Other Lights 5X7 and Larger

Other Lights Smaller than 5X7

The Winner's Circle

For those of you not in The Winner's Circle, you may submit up to 3 photographs, total, in any category or combinations of categories.

For those of you in The Winner's Circle, you may submit only 2 photographs and they may be any size or any lighthouse, anywhere.

All pictures must have a registration slip with them. ANY picture with a name (other than that of the lighthouse) on it ANYWHERE will be disqualified. Registration slips may be copied, drawn in pencil, any way you can make them if you need extras. Oh, they will also be available at the meeting for YOU to fill out (not the registrars).

NO photos will be returned by mail unless return postage is included!

Throughout this article I have mentioned only Lighthouses. Lightships, lens or any part of a 'lighthouse' so to speak are perfectly ok. Just identify where it is from so it can go into the appropriate category.

New Stuff!

I have had suggestions to have a category just for lighthouse parts. I will tell you that it didn't work in the past as there were not enough entries. I have also had it suggested that we split the Other Lighthouse category and have a category for United States Lighthouses (outside of NJ) and foreign lighthouses. This adds four more categories (size being a factor) to an already busy schedule. It has also been suggested that we revisit the digital (i.e. enhanced) picture category. Send me e-mails, letters, etc., and I will further entertain these ideas and others.... for future years.

Help!

As I mentioned at last year's Photo Contest, I would like to have 2 to 4 people (depending on the size of the category) to help in registering and putting out the pictures and counting the ballots for their category after the voting. If you would like to help, see me at the break of the December meeting and we will meet for NO MORE than ½ hour after the meeting to discuss the details and give out information before we all go off to Carol DiNapoli's Holiday Get-Together.

And to all of you who have helped in the past, THANK YOU, THANK YOU, THANK YOU!

HOSPITALITY

By Betty Smith

On behalf of the Audubon Park 4th of July Committee, I would like to take this opportunity to thank everyone who purchased your lunch at the September meeting. Your support over the last 3 meetings will help us with our town 4th of July celebration next year. We will NOT be selling food at the December meeting due to the social being held after the meeting so please take this into account when you plan your day. As for selling food at other upcoming meetings, we will let you know in the Beam if we will be selling it. Again, thank you for your support.

Also, if you would like to bring something in the way of morning refreshments for the December meeting, I ask that you please drop me an e-mail at bjksmith@juno.com or call me at 856-546-7810 or drop me a note at 7 Goldfinch Road, Audubon Park, NJ 08106. I will then have a better idea of what I need to buy in the way of refreshments for the meeting and avoid having an over-abundance of food. Again, I really want to thank all of you who are helping out by donating refreshments and helping the day of our meetings.

I am also looking for individuals who, if they live around where a meeting is going to be held, can get to the meeting place by 9:30 a. m. and set up the 100 cup coffee pot. You just have to let me know at the prior meeting and I will give you the coffee pot. This would enable Al and I to not have to leave our house at 7:30 a. m. for each meeting to get it set up and would be greatly appreciated.



A Message from Membership...

(Mary Beth Doherty, Membership Chair)

Membership Renewal 2002!!

Yes, it's that time of year...Your renewal form will be mailed separately. It is personalized--please check the information carefully, *make any changes clearly* and return promptly.

A special "thank you" to Pat Brooks for her assistance in the renewal process this year...you were a big help and made the 2002 renewal process easier this year!!

Meeting Attendees:

There were 200 people signed-in at the Barnegat Light meeting in September. **Reminder:** Please sign the book—we like to keep track of how many people are coming to the meetings to ensure enough chairs.

Membership Numbers:

At printing time of this issue, the membership numbers are as follows:

Single Memberships = 373
 Family Memberships = 372 x 2 = 744
 Total = 1117 members

A Few Reminders:

- ❖ *Society Nametags:* Stop by the Membership Table to order. The tags are \$4.00 each, paid for when ordering, and will be mailed to you. (Orders are taken at meetings only.)
- ❖ *Changes:* If you're moving, changing your membership status, phone number, or e-mail address, please let me know so I can have your most current information. I like to keep the database up-to-date!
- ❖ *Gift memberships:* A membership to the New Jersey Lighthouse Society would be the perfect gift for that person who has everything!

New Members: Since the September meeting, the following members have joined our Society. If you happen to meet them at a future meeting, please welcome them.

Mangione & Jim Bernadette	Marlton, NJ
The Braner Family	Wharton, NJ
Mary Brooks	Salem, NJ
Betty Carhart	Forked River, NJ
James Fee	Morrisville, PA
John Francisco	Little Falls, NJ
Lori Freedman	Highland Park, NJ
Faith Giamboi	Monmouth Junction, NJ
Kevin Harkins	Vineland, NJ
Cadmus, Sylvia & Jessica Hull	Sicklerville, NJ
Rosemarie Jones	Lewisville, PA
Anita & Harold Kessler	Lakewood, NJ
Marie Kimball	Staten Island, NY
Jane Kunka	Alexandria, VA
John & Helen Leonard	Clinton, NJ
John MacFarland	Aston, PA
Cathy Mennitt	Spotswood, NJ
Letitia Minnick	Lansdale, PA
Franklin & Carolyn Neal	Millville, NJ
Mitchell Perkey	Baltimore, MD
Gustave Poulos	Parlin, NJ
Theresa Rahming	Forked River, NJ
Kelly Remley	Vineland, NJ
Heather & Matt Saum	Rutherford, NJ
Charles & Jane Schock	Media, PA
Carol Shellem	Pleasantville, NJ
Christina Snider	Glenolden, PA
Joyce St. John	Pleasantville, NJ
Gregory Taylor, Sr.	Piscataway, NJ
Sal & Carol Tozzi	Jackson, NJ
The Ware Family	Brielle, NJ
Frank & Susan Webb	Collegeville, PA
Sherah Young	Hawthorne, NJ
Carol & Ray Zrybko	Washington, NJ

IS IT A CLICK?

Did you ever say to yourself when you go to a meeting--It's the same people doing everything--it must be a click. Well, believe me, it is NOT. It is just that we have over 1000 members in NJLHS and if we have more than 100 members volunteering to help with anything--that is alot. Won't you please come out and volunteer to help us in the society--either at a meeting, an outreach or anything and give a couple hours of your time to help us. Just contact one of the officers, and believe me, they will be more than happy to sign you up. Remember without volunteers there will not be a NJLHS.

Betty Smith



Esopus Lighthouse

Finally a gorgeous day for a cruise up the Hudson River. Saturday, August 25, 75 members cruised on the motor yacht, "Teal", to Rondout, Esopus, Saugarties and Hudson-Athens Lighthouses. It was seven hours of beautiful

Activities Update

scenery, delicious food and good conversation.

Thanks to Captain John Cutten and all who participated.



Roundout Lighthouse

"Holiday Lights" on Saturday, December 1 will be our first attempt at a dress-up social gathering. At the lovely Sea Girt Lighthouse, bedecked and bedazzled for the holiday season, we will be serving punch, hors d'oeuvres, desserts and coffee. Please join us. See old friends and meet new ones. The time is 2:00 p.m. - 5:00 p.m. following our regular meeting.



Saugarties Lighthouse

Regarding the North Carolina trip, I'm trying to reschedule for late April early May. No promises please. The itinerary will include all eight North Carolina lighthouses, approximately 7 days, estimated cost \$1,100 per person. Details to follow.

Photos and Article By:
Carole DiNapoli
Activities Chair



Roundout Lighthouse

Challenge 2001 T-Shirts

Orders must be received by Dec 3, 2001
Orders will be taken at December 1, 2001 Meeting
Price \$20.00, Shipping Included

Send orders and Money Order or Check to: Betty Smith
7 Goldfinch Road
Audubon Park, NJ 08106

Sorry!!!! No Deliveries before Christmas

Order must have the following information:

Name _____

Address: _____

Size _____ Quantity _____



Light Bytes

By Greg Janskey

This quarter's article highlights a very valuable resource, publicly accessible lighthouses. The address for the page is: <http://www.cr.nps.gov/history/maritime/ltaccess.html>, and is brought to us by the National Parks Service. I use this site when I'm travelling and I know I will be in "lighthouse territory"; that territory that I have loosely defined as near the water and possibly containing a lighthouse, causing me to go out of my way looking for lighthouses. This is definitely a no-frills site; not a lot of pictures, but jam-packed with information.

The main page is presented nicely, with a picture of Portland Head Lighthouse and a listing of the categories lighthouses can be found under. The categories are: Great Lakes, Gulf Coast, Mid Atlantic Coast, North Atlantic Coast, Pacific Coast, and South Atlantic Coast. Curiously, the New Jersey Lights have been divided between the Mid Atlantic Coast and the North Atlantic Coast categories. A disclaimer is also listed on the main page: "Information on these pages is derived from the National Maritime Initiative's computerized inventory of historic light stations. Please keep in mind that this information is subject to change without notice. When planning a visit to a specific lighthouse, it is a good idea to call beforehand." While veteran lighthouse hunters know this and have probably learned a few lessons along the way, what's interesting is the mention of a computerized inventory. Clicking the link takes you to a page where you can sort through the accessible lights, listed by state.

Clicking on one of the categories takes you to a list of publicly accessible lights, broken down by the states in the given region. For this example I'll use North Atlantic Coast. The North Atlantic Coast lists lights in: Connecticut, Maine, Massachusetts, northern New Jersey, New York, Rhode Island, and Vermont. Within each state, there is a listing of the lights, each with a hyperlink that takes you to the page for the lighthouse. Before clicking the link to the light, you will no-

tice a few tidbits of information such as: a web site for the lighthouse if it exists, its location, who owns/operates the light, and contact information/hours of operation. Yes, Sandy Hook has a link to the New Jersey Lighthouse Society's pages.

The real treasure is when you click on the link to the particular lighthouse. Here you will find a picture (some are old - just look at Sandy Hook), some summary information, and some very detailed information. All of the lights follow a general pattern: at the top, there is a detailed location of the lighthouse, that includes the Coast Guard district. Next, there are a series of standard questions for each lighthouse, with answers, if applicable. Some of these questions include: foundation materials, construction materials, shape, relationships to other buildings, original optics; along with some obvious information like height, milestones and years. The middle section consists of a section detailing: keepers buildings, other buildings, and information on the owners; which would include website, hours of operations, and plenty of contact information. Finally, there is a section that details the documentation of the light and some remaining miscellaneous information.

Three other links that are on the main page are worth mentioning. There are links to sites that contain: other Maritime resources in National Parks, publicly accessible large historic vessels, and publicly accessible life saving stations.

I want to highly recommend this web site! There is tons of information, some highly specific and detailed, and some information that is esoteric. The site is also great for the traveler as it can save you time in plotting routes and ensuring you see the lights when they are open. If you have any questions, comments, complaints, or suggestions, email me at greg_jansky@yahoo.com.

Festival of Lights at Calvert Museum

Solomon, MD

Fun-filled day for all ages at the Calvert Museum Festival of Lights in Solomon, MD on Saturday, January 19, 2001 from 10 to 5. The museum will be open along with the Lighthouse. There may also be visits to Cove Point Lighthouse from the Museum.

Christmas Night Tours

Tuesday, December 18th, 5 PM—8 PM

Telephone For Information

856 423-2545 856-423-1505

Tinicum Rear Range Lighthouse

Caroling—Refreshments—Santa Claus

IS YOUR NAME ON THIS LIST?

If so, I have your pictures from a previous photo contest, some even with ribbons! If you know any of these people, perhaps you could pick up the photos for them! I also have many certificates that weren't picked up. I will have all of these at the December 2001 and March 2002 meetings. Please see me. Yes, I am hard to catch sometimes but I am always around.

Here are the names:

Lori Vegotsky	Marvin Serota	Jason Koralja
Flo Greco	R. A. Marzullo	Wilbur Burns III
H. E. VanGorres	John Sheedy	Tony Borusiewicz
Dorothy Cloupe	John Murtha	Phyllis Martin
Kenneth Bowden		

Thanks— Al Smith



Harbour Lights Invades New Jersey

By Dennis Whelan

On October 3, 2001 the following New Jersey lighthouses were invaded by a large group of Harbour Lights collectors. They were in Baltimore for the Third Harbour Lights Collector's Reunion.

It was slated to open on 10-4-01 and some pre-reunion activities had been planned by John Chidester (webmaster extraordinaire) and his cohorts. He contacted me, Dennis Whelan (a Harbour Lights collector and member of NJLHS) for assistance in setting up a tour of NJ lighthouses.

This was in October of 2000. I contacted people at Sandy Hook (where I volunteer), Twin Lights, Sea Girt, Hereford Inlet, Absecon and Cape May and gathered information and consulted with John Chidester as to what would be the best plan of attack.

We decided to start in North Jersey and work south. It was decided, over time, to visit the following lighthouses—Tinicum Rear Range, Sandy Hook, Twin Lights, Sea Girt, Absecon, Hereford Inlet and Cape May.

Unfortunately, some changes had to be made due to time constraints and Absecon was dropped from the list of lighthouses to visit.

The day started early, but not bright in Baltimore. The buses pulled out at about 6 am and were on their way to NJ.

The planning of the tour could not have been done without the assistance of Tom Laverty (President of NJLHS/Curator at Twin Lights), Barry Wood (Director NJLHS), Conrad Yauch (Sea Girt), Betty Mungier (Hereford Inlet), Elinor Veit (Absecon) and Rich Veit (Lighthouse Manager) and Dean Cramer (Curator Cape May Park).

The first stop was made at Tinicum Rear Range and the collectors lived up to their name—they collected the first of their prizes of the tour—as many of the 4 P's of lighthouse visits they could manage—pins, patches, postcards and photos.

The ultimate is to actually get into the lighthouse and they accomplished this at Tinicum. It was not possible for all to climb in the short visit, but many did.

They continued on to the next stop—one bus would go to

Sandy Hook and one bus would go to Twin Lights, and then they would switch after spending 45 minutes there.

The first bus arrived at Sandy Hook at about 11 a.m. and they were off. We had a plan set up to maximize the amount of climbers possible—we positioned one person at the bottom of the tower and one at the top and moved people in and out as quickly as possible. We still were not able to get everybody up.

We had the services of Bill Geilfuss at the top in his keeper's uniform along with Sal Trentacoste and Ray Vliet at the bottom of the tower. Esther Whelan (my wife) and Jane Horan were in the keeper's house as greeters, and most importantly selling those 3 P's. I was attempting to be in three places at once and assisted in the house by manning the passport stamp area. We had the national park stamp available thanks to ranger Tom Hoffman, the resident historian at Sandy Hook.

When the first bus arrived I was informed by Paul Brady (photographer extraordinaire) that they had held an auction on



Dennis Whelan and Betty O'Brien

the buses on the way up from Baltimore and the prize was a HL New Point Loma and the winner bid \$550.00. This amount was donated to the NJLHS by Betty O'Brien (see photo- Betty O'Brien and Dennis Whelan). They both were thanked profusely and also were sent a letter by Tom Laverty (President of NJLHS).

The first bus left Sandy Hook and the second arrived and the process was repeated. While the one bus was at Sandy Hook the other was at Twin Lights where they had the pleasure of touring both towers.

They moved on to Sea Girt and almost overwhelmed the two volunteers there. Conrad Yauch informed me that the collectors were one of the most patient and polite groups they have ever had there. They even pitched in and helped them sell items to others in their group. Again, due to time constraints and size of the lighthouse, not all were able to get into the lantern room.

The buses continued on to Hereford Inlet where the biggest disappointment of the tour occurred. They were running late and had to arrive at Cape May prior to 6 pm or not be able to get into the park

(Continued on page 9)



(Continued from page 8)

This meant only a short whistle stop at Hereford Inlet. They did satisfy most of the 4 p's, but not the thirst for the tour of another lighthouse. Betty Mungier and her assistants were saddened by the fact that they would not be able to show off their lighthouse, but were glad the collectors could stop for pictures, etc.

The tour ended at Cape May where most were able to get up to the top and also get into that final gift shop of the day. The only thing left was to get those pictures of Cape May at sunset and start that long trip back to Baltimore.

The day started for most at about 4-5 a.m. and ended at about 11 p.m. This was just the start of the reunion though. It would not be over until Monday, the 8th for many and not until after the Lighthouse Challenge 2001 for some.

Many of the participants on the tour expressed their thanks to all for setting up the visits and expressed a wish to come back at a later date for a more leisurely look at the lighthouses of NJ.

Glen and Elinor Strunk's Free Day in Dublin

Glen and I went to Ireland from the 10th to the 20th of July 2001. One of the reasons we chose to go at that time was because there was a whole day in Dublin to do as we pleased. This was our sixth trip to Ireland, each one with Skippack Travel.

We arrived in Dublin on Sunday, July 15th, and were staying at Cassidy's Hotel, Upper O'Connell Street. Before going to bed, we asked the receptionist to make arrangements for us to have a taxi for about three hours in the morning. The cost was 25 punts an hour.

Monday (16th) was a free day in Dublin to do as we pleased. After breakfast we sat in the lobby waiting for the taxi. He came about 9:00 a.m.; his name is Tommy O'Connor. We told him that the map showed that there are some lighthouses in Dublin Harbour and that we also knew about some in Dun Laoghaire (pronounced Dun Leary) and also in Howth (pronounced Howt). Glen wanted to go to Dun Laoghaire to also visit a museum there, but it was closed on Mondays. Tommy took us to the harbor and stopped by the police station to ask about where the lighthouses were and if we could get into that area. They directed Tommy where to go and we got to see North Bank, North Bull, and Pool Beg lights. Tommy found a man who worked where we parked and asked some questions about the lights. This man directed us to the Harbour Master and there we met the man in charge. He told us about the lights, gave us an old book that lists all the navigational lights in the British Isles and northern France, as well as some other literature about the harbor. We got to an area for some closer looks at North Bank, North Bull, and Pool Beg.

From there we went to Howth and saw both the old and new lights. Glen also saw the remains of another light. Tommy then took us up to The Summit where we could look down on the Baily lighthouse. From this vantage point, we could look across Dublin Bay and see one of the lights at Dun Laoghaire.

Tommy took us to a pub for coffee. It was a very enjoyable time. Instead of taking us back to the hotel when our three hours were up, we asked Tommy to drop us at Grafton Street. Grafton Street is a pedestrian only street with lots of shops.

If anyone is going to be going to Dublin, you can reach Tommy O'Connor through Link - Taxis at 011 + 353 + 1 + 478-9000. Tommy's home phone number is 011 + 353 +086 876-6549. We highly recommend him.

WE NEED YOUR HELP!!!!

The Federal Government has declared the Currituck Beach Lighthouse surplus property! The lighthouse will be transferred to an eligible entity. Outer Banks Conservationists, Inc. (OBC), opened the lighthouse to the public in 1990 and has spent nearly \$1.5 million of private (non-tax) funds on its restoration, maintenance and staffing. Please support our application to receive the lighthouse, continue its restoration, and KEEP IT OPEN TO THE PUBLIC. Otherwise the facility may be assigned to another eligible entity. Below are other facts about OBC.

- OBC is a 501 (c) 3 private nonprofit organization requiring no government funding.
- OBC has a 50-year lease with the State to restore and maintain two Keepers' Houses and other buildings located within the lighthouse compound.
- The 3-acre compound and 27 surrounding acres owned by the State are listed in the National Register of Historic Places.
- The lighthouse tower is located on .8 acres in the middle of the State property. From 1991-2001 more than 800,000 people climbed the lighthouse between Easter and Thanksgiving.
- The transfer of lighthouse property is in accordance with the National Historic Lighthouse Preservation Act of 2000 (16 U.S.C. 470).

Currituck Beach Lighthouse 1875-2001
Standing Tall and Shining Bright for 125 Years
Please visit our web site: www.currituckbeachlight.com



Society gives \$3900 grant to Tuckerton Seaport for Lens Re-Assembly

Pictures and Story by Tom Laverty



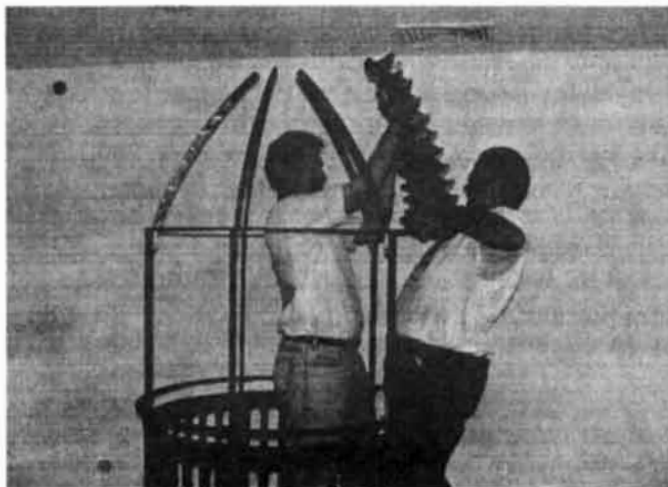
The Society Board of Directors voted to grant the Tuckerton Seaport Museum \$3900.00 to cover the cost of the stabilization and re-assembly of the Brandywine Shoals 3rd Order lens. Brandywine Shoal is located at the mouth of the Delaware Bay just off Cape May New Jersey. The United States Coast Guard had given the lens to the museum a few years ago when a more cost-effective and lower maintenance apparatus was put in

place at the light tower. The Society had previously given money to clean and store the lens while the replica Tucker's Island Lighthouse was completed at the Seaport.

This past August for three days lens specialists Jim Dunlap and Nick Johnston came to Tuckerton to do the work. Both have extensive backgrounds in lens restoration having worked on more than two dozen projects around the country. Dunlap, a retired Coast Guard Officer, was featured on the PBS series *Legendary Lighthouses*, as the curator of the Ponce Inlet Light where he had established the only lens repair facility in the United States. He now works for the National Lighthouse Museum on Staten Island, and does consulting work on Fresnel Lenses. Johnston, also retired Coast Guard, got his experience working with a handful of people who still did this type of work for the Service. Johnston and Dunlap were both part of a larger team that worked on the Navesink Twin Lights lens in 1998.



The restoration and re-assembly took three days to complete. On the second day, New Jersey Lighthouse Society President Tom Laverty put in a nine-hour day volunteering on the project with them. Visitors had an opportunity to watch the work as it progressed and ask questions. The lens was together by August 8th and Trish Shuster, Education Director of the Seaport Museum, got the honor of putting the last screw in place. The Museum now plans to build an exhibit around the Fresnel lens and the history of the Brandywine Shoal Lighthouse





OUTREACH

Yvonne Miller

The Tuckerton Seaport and Baymen Museum's Decoy show on September 29 and 30, 2001 was well attended despite the bad weather on Sunday. Many thanks to the volunteers who maintained our table over the two days: Peg & Ernie Boerner, Catherine Klix, Mary Katherine Kennedy and Jack & Carol Slavin, and to Joe Kelly for making sure the display and materials got to the right place and home again.

We will not be setting up at the NJEA convention this year. However our next Outreach will be at the Calvert Museum in Maryland in 2002 thanks to Al & BJ Smith.

Members... if there is a festival or exhibition that you would like to have NJLHS represented, please call me at 856-797-2451 and leave a message or email yymm615@hotmail.com.

T-Shirt Contest

The following winners of the T-Shirt Contest were as follows:

T-Shirt with the most N.J. Lighthouses on it: Marion Hudspeth

T-Shirt with the Patriotic Lighthouse with colors, red, white and blue: Marcia Griffin

T-Shirt with the USA Lighthouse that was recently moved and restored: Ruth Ann Walsh

T-Shirt with furthest Lighthouse: Rosemarie Dixon

Thank you to our judges, Nancy Matthews, Kathleen Wilkinson, and Philip Frowery.

Thank You, Joan Wood

President's Corner

Tom Laverty

As the 2001-year comes to a close we have a lot to remember. A bright spot after the recent events that have and continue to affect us all, was the Lighthouse Challenge Weekend. It was a pleasure to get back to thinking about lighthouses and meeting the thousands of visitors who took the Challenge and had a great time. I did not hear of anyone getting a speeding ticket this year, although several people completed the tour in one day. Even with the extended hours of 8:00 am to 6:00 p.m. there still was a knock on the Navesink Twin Lights keepers quarters door at 7:00 p.m. from someone looking for that one last stamp. Rick Weber and his Challenge Committee did another outstanding job. You will read more about the Challenge in the spring issue of *The Beam* after we have had time to collect photographs and stories about the event.

Please plan to attend the December meeting, not because it is our riveting election meeting, that mundane but essential yearly task important to the health of our organization, but because Carole DiNapoli has planned something special for you at Sea Girt Lighthouse. It will be a Holiday event not to be missed by Lighthouse lovers. Yvonne Miller our programs chair and first Vice President has also planned an interesting day, information which you can find under Program Signals in this issue. If you missed getting a Harbor Lights Calendar at the Lighthouse Challenge, we have a few left and you can try again at the meeting raffle.

As we wind down the year I would like to thank all the people who make the New Jersey Lighthouse Society the great organization it is. A lot of folks' involvement has made us a much larger and more active group than we could have imagined. The active Board of Directors, committee chairs, and people who support them make our programs like the meetings, Lighthouse Challenge, photography contest, preservation raffle (the quilt), tour guides at Sandy Hook and Absecon, and more, the positive influence we now enjoy at all our New Jersey Lighthouses. Due to the tremendous support of our activities we were able to give grants to the National Lighthouse Museum (\$2500), and to Tuckerton Seaport for the restoration of the Brandywine Shoal Lens (\$3900). I would like to thank each and every one of you for your support of our organization and look forward to the 2002 Lighthouse year.



Program Signals:

By Yvonne Miller

The winter meeting, December 1, 2001 will be held at the Spring Lake Heights Elementary School, Spring Lake Heights, NJ.

10:30 AM—Hospitality Served

11:00 AM—Meeting called to order:

Elections for Corresponding Secretary and 3 Directors. As of the September meeting, nominations are closed. Those nominated for election are:

B. J. Smith – Corresponding Secretary

Doreen Lagattuta – Director

Al Smith – Director

Ray Vliet – Director

12:15 PM—Break (Lunch will not be provided at this meeting. It is suggested that you if needed to have lunch, bring your own.)

12:30 PM—Jim Crowley, author of Lighthouses of New York

2–5 PM—Holiday social at Sea Girt Lighthouse – Refreshments will be served. Further details can be found in Carole DiNapoli's article in this issue.

DIRECTIONS from the North or South via Garden State Parkway take exit 98. Bear onto Route 138E. Go through 4 traffic lights. Follow sign for Highway 35 South (sign says Spring Lake/Sea Girt). Make a left at the second light onto Allaire Road. Go one mile to the next light (Rt 71), make a right onto Rt 71 South. Go two blocks and make a left onto Brighton Avenue. Pull into the School parking lot on the right. Enter through the gymnasium doors and proceed to the cafeteria.

My thanks to Laurie Wolfrum for her assistance in arranging this meeting site and for the directions.

SPRING MEETING

March 16, 2002 is the Photo Contest meeting but we are departing from our usual routine of having a speaker related to the Photography Contest. Our special guest speaker will be Tim Harrison of Lighthouse Digest, author of Lost Lighthouses. Tim will also have his books available to sell. If you already have either of these books, bring them for Tim to sign. The meeting will be held in the vicinity of the Absecon Lighthouse and the new Keepers House will be open.

2001 FALL MEETING RECAP

190 members and guests attended the Fall meeting. To all of the members who helped set up and clean up the hall, many thanks.

Dave Veasey, John Bailey, Elinor DeWire and Kim Ruth were available with their books as promised. Jim Gowdy is still too ill to attend but Kim Ruth informed us that Jim will be going to the Mayo Clinic for further treatment. We wish him well. Bill Gately and John Bailey Lloyd were unable to attend and they were missed. This was something that I have wanted to do for a long time and am glad it worked out so well. I hope the members and authors enjoyed it and had a successful day. The Audubon Park Fourth of July group served up a great lunch as usual. Many members again helped out especially with setting up the tables and chairs and with the clean-up. To everyone "thanks for your cooperation and assistance." Ways and Means sales were brisk for the day. The proceeds from the 50/50 netted the Society \$220. That sum and an additional \$100 will be donated for the families of the victims of the September 11th tragedy. Donations for hospitality will also be sent to benefit fund.

I would like to extend my best wishes for the coming holiday season, to all our members and their families, while these aren't the happiest times this year, we can be thankful that we live in the U. S. Let's hope that the coming New Year will be prosperous, happier and safe. God bless America

Watch for a full report,

Challenge 2001 a Hugh Success

pictures and comments in the March 2002 issue

Hot off the Press.....A recent Board meeting announced there will be a Challenge 2002, scheduled for the third weekend in October, 2002. .

Mark your calendars, Saturday, October 19 and Sunday October 20, 2002