



The Beam

Journal of the New Jersey Lighthouse Society, Inc.

Number 41

September 2000

Ludlam Beach Lighthouse

by Kim M. Ruth

The Ludlam Beach Lighthouse is one of the lesser known lighthouses in New Jersey. That's understandable as it was a relatively minor lighthouse that was constructed to help illuminate the coast between Hereford Inlet to the south and Corson's Inlet to the north, and was in operation for 39 years, from 1885-1924.



Ludlam Beach Lighthouse, Sea Isle City, New Jersey. This lighthouse was built in 1885. This postcard view of the lighthouse is dated July 20, 1915.

From the author's collection.

Built on Ludlam Beach (at 31st Street, Sea Isle City) at 39° 09' 42"N by 74° 41' 05"W, which today is approximately the surf line, the lighthouse was authorized on July 7, 1884, when Congress appropriated \$5,000 for the construction of a wooden frame



Ludlum Beach Lighthouse. Date unknown. Photo courtesy of Coast Guard Historian's Office.

structure that would serve as both the lighthouse and keeper's quarters. The station also had a oil storage house and a privy at the rear of the lighthouse.

The lighthouse, a frame dwelling painted white with green shutters and lead trim, was completed and first illuminated on October 20, 1885. It was equipped with a 4th order flashing lens that flashed a white light once every fifteen seconds. The light was located 36 feet above high water and was visible 11 1/2 miles at sea. A wooden bulkhead helped to prevent erosion at the site.

The first keeper was Joshua Reeves, formerly an assistant keeper at the Absecon Lighthouse. Reeves was paid \$500 a year to tend the light.

Ludlam Beach Lighthouse	1
NPS Re-dedicates Sandy Hook LH.....	2
Lighthousing	3
You Can't Get There From Here	4
(Trinity House & Northern LH Board)	

In This Issue

Y2K Preservation Raffle	5
Society News	5
Notes from Near & Far.....	7
Program Signals.....	8



Ludlam Beach Lighthouse, Sea Isle City, New Jersey,
as it appeared circa 1900-1905.

Postcard view.

The lighthouse was severely damaged in a storm on September 8, 1889. So severe was the damage that the keeper removed the lighting apparatus from the lighthouse. Repairs were made but erosion continued to be a problem at the lighthouse. Through the years a number of bulkheads were constructed in front of and around the lighthouse.

In 1912, the illuminating apparatus was changed from an oil wick to incandescent oil vapor.

A storm in 1914 damaged the protective bulkhead, but the Lighthouse Service was tiring of the expense of protecting the lighthouse.

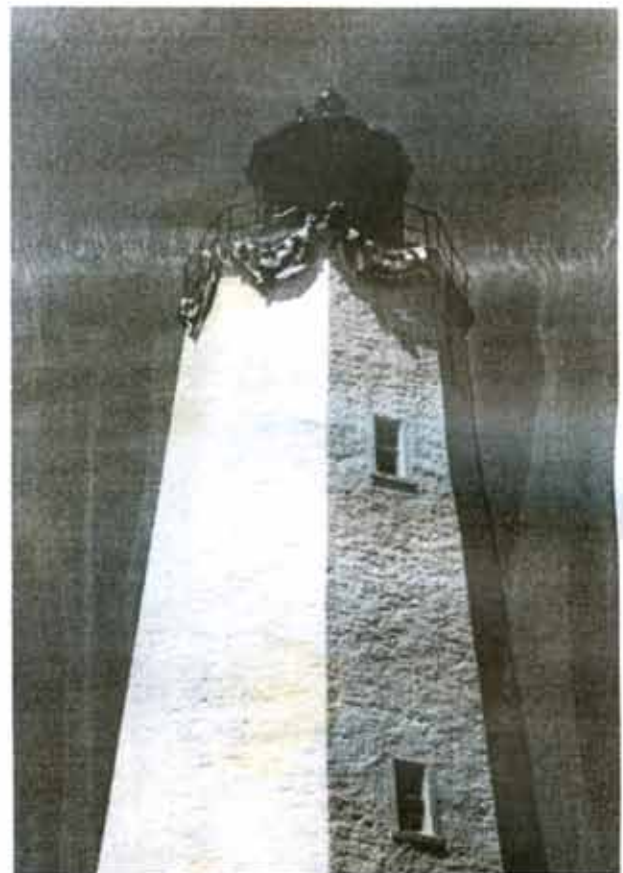
The beginning of the end for the lighthouse came on November 21, 1923, when the keeper's pet knocked over an unattended oil lamp that was on the kitchen table. By the time it was discovered the kitchen was engulfed in flames. With help from Coast Guard personnel from a nearby station the fire was extinguished but not before the kitchen and much of the roof was destroyed. The lens and lantern were somewhat damaged but not enough to keep them from shining the light.

Repairs to the roof were being made in March, 1924, when another storm tore away the work, making further habitation impossible. A 40-foot steel tower was placed nearby, which sported an acetylene light. The remains of the dwelling were sold and moved to 31st Street and Landis Avenue. During the 1940's the house was again moved to its present location at the NW corner of 35th Street and Landis Avenue, where it was jacked up and became the 2nd story of a private residence.

National Park Service Re-Dedicates Sandy Hook Lighthouse

by Al Smith

The National Park Service marked the end of the Sandy Hook Lighthouse restoration project with a re-dedication ceremony on June 10, 2000, within a day of the 236th Anniversary of the first lighting of the beacon. Renovations closed the lighthouse to visitors last year. The lantern room was repaired, windows were replaced, the steps fixed, stonework patched and the large rust stain removed. The entire tower received a fresh coat of paint.



Newly renovated Sandy Hook Lighthouse
at its re-dedication ceremony,
June 10, 2000.

Photo by Pat Brooks.

Mr. Rusel Wilson, the new Park Superintendent, opened the ceremonies by talking about Sandy Hook's history and his hopes for the future of the lighthouse.



(Left) Congressman Pallone cutting the ribbon with Chester Growcock. (Right) Superintendent Wilson looks on as Ray Cosgrove, President of the Sandy Hook Foundation, presents Congressman Pallone with a Sandy Hook statue in recognition of his efforts on behalf of lighthouses everywhere and Sandy Hook in particular.

Photo by Sal Trentecoste.



Our very own President Tom Laverty at the Sandy Hook Lighthouse Dedication.
Photo by Sal Trentecoste.



The decorated cake served by NJLHS members to the guests at the Sandy Hook rededication.

Photo by Sal Trentecoste.

Lt. Commander Jack Cline, Commander, U.S. Coast Guard, Sandy Hook, spoke of the Coast Guard's role as keepers of the light.

Congressman Frank Pallone thanked everyone for their work and pledged to continue to work for lighthouses throughout the country.

Tom Laverty, curator of Twin Lights and President of the NJLHS, thanked the members of the Society for their work during the restoration and pledged continued cooperation with the NPS and Sandy Hook Foundation for the future of the lighthouse and keeper's house.

Ray Cosgrove, President of the Sandy Hook Foundation, thanked everyone who was involved in the restoration and pledged continued cooperation with the NPS and NJLHS at Sandy Hook.

Mr. Cosgrove presented Congressman Pallone with a plaque and model of Sandy Hook lighthouse in recognition of his continuing work on behalf of lighthouses everywhere.

The ribbon was cut by Congressman Pallone and Mr. Chester Growcock, a former Coast Guardsman who was responsible for shutting off the light at Sandy Hook after the attack on Pearl Harbor.

The New Jersey Lighthouse Society provided a decorated cake and refreshments for all those in attendance.

Lighthousing

by Pat Brooks

My sister Dixie and I love lighthouses. We got interested in them several years ago. We were always near the ocean or on a boat ever since we were young kids. We started out one day about 11 years ago, following maps and driving to places we didn't know existed to seek out a light. We got lost many times but we laughed a lot and had fun. Not too long after we started this project I got sick, and we had to put our plan to find all the lighthouses in New Jersey on hold.

Dixie read something in a magazine about the NJLHS, so she joined the society. She made a date shortly after for both of us to go on a boat trip to see "lights" that we could not do by car. When the day came to go I was too sick to go, but she went and met some nice people. Sometime after that I went with her to a meeting at Sandy Hook and we both enjoyed it very much because it brought back so many childhood memories. When I started feeling better I joined the NJLHS also. The meetings were great and very interesting and we started making some new friends. Soon after, we got involved in helping out at the meetings and enjoyed every minute.



When the Sandy Hook Lighthouse opened again after being closed for so many years, we jumped at the chance to volunteer to be greeters.

Soon we started to take a few of the trips with the group. We visited Maine, Cape Cod, Long Island and took a couple of boat trips and saw many "lights." We are always looking forward to what's coming up next.

When Sandy Hook Lighthouse was closed for renovations we missed it a lot, and could hardly wait for it to re-open. I took many pictures every few weeks of the progress being made. When it was finished it looked fantastic.

We were there at the re-dedication ceremony to work at the table, to do what we like to do, greet all the people that were visiting. We love lighthouses. This is a great thing that we do together.

Trinity House & Northern Lighthouse Board **You Can't There From Here Without a Car and a Boat**

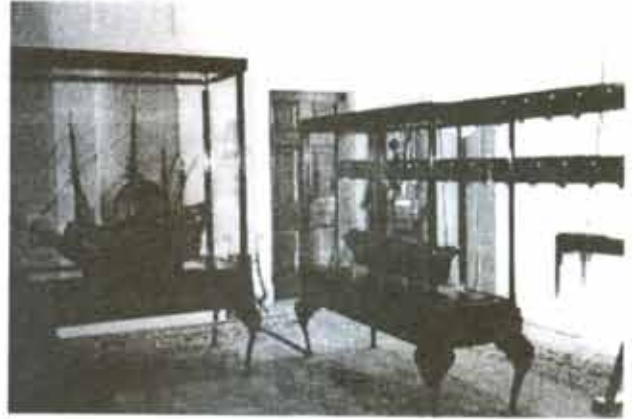
by Joan Walton and Annette Colt

In July, Annette Colt and I traveled to an author's meeting near Edinburgh, Scotland. We spent a few days in London and visited Trinity House, the British Lighthouse Board, where we met Jane Wilson, Information Officer, and her staff. We were graciously welcomed, given booklets describing their operation and allowed to photograph the interior displays. The information will be available at the September meeting.



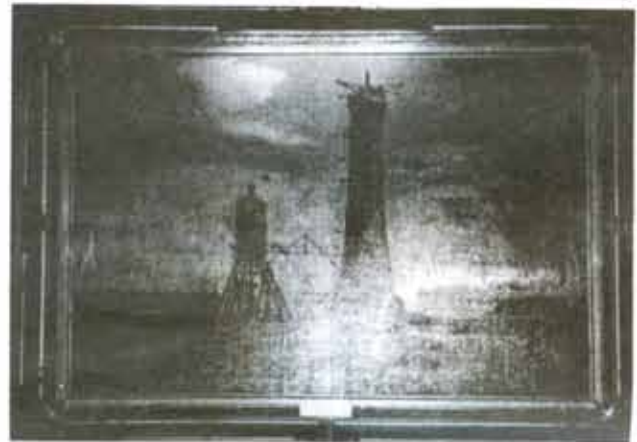
(Left) Trinity House, London, England (Right) Northern Lighthouse Board building, Edinburgh, Scotland. Note the lighthouse over the doorway.

Photo by Joan Walton.



Exhibits in the Reception area—Trinity House, London, England.

Photos by Joan Walton.



Main staircase, inside Trinity House.

Photo by Joan Walton.



Leaving Trinity House we had lunch at a nearby pub before visiting the Tower of London and Tower Bridge where we found the Thames boat which carried us to Greenwich to see the Royal Naval College and the *Cutty Sark*. As we left the area many of us crowded to the wharf to photograph a Norwegian training ship in full sail on the Thames. The next day we toured Bath and Stonehenge. No lighthouses. We took the 10:30 a.m. train to Edinburgh and spent three days at our literary conference at Heriot-Watt University.

In order to further explore Edinburgh, we stayed an extra two nights at the Roxburgh Hotel in the city and covered a lot of territory. The first thing we discovered was the Northern Lighthouse Board Building around the corner from our hotel. We rang the bell and were warmly greeted by Lorna Grieve, Information Officer, and given permission to photograph the rooms and display, and presented with information folders, maps and calendars. Unfortunately, the lighthouses are not accessible without a car and a boat. However, on the train to London we were able to photograph three lighthouses along the shore with the aid of the maps provided. In addition, in a book shop we found the book by the descendants of the lighthouse building Stevenson's, for ourselves and the NJLHS archives.

The weather was especially cooperative for both England and Scotland. Only a few morning showers. Lots of castles, good food and lovely people. Glad to be home. Now it's off to Alaska!

Y2K Preservation Raffle Hugh Success!

by Al Smith

Thanks to each and every one of you who sold or purchased one ticket or one book or many books, this year's Preservation Fund Raffle made **\$6,845.64** to help with lighthouse preservation projects throughout the state.

And the winners are:

1st Prize - The Elms Bed & Breakfast was won by Bill Geilfuss III of Wayne, Pa.

2nd Prize - The Saugerties Lighthouse B&B was won by Jan Williams of Rahway, NJ.

3rd Prize - The Lighthouse Inn Gift Certificate was won by Rick Weber of Dover, NJ.

4th Prize - The Lighthouse Depot Gift Certificate was won by Marilyn Ryland of Belle Mead, NJ.

5th Prize - The framed Sandy Hook painting was won by Joan and Paul Murtha of Brick, NJ.

Prizes 6 through 10 - the Barnegat Lighthouse woven throws were won by:

**Margaret L. Soltis of Phila., Pa.,
Henry Doherty of Lavallette, N.J.,
Charles Erb of Howell, N.J.,
Sandra Treas of Medford, N.J., and
Debbie Keyek of Haddon Twp, NJ.**

Congratulations to the winners and to each of you who helped make this our biggest raffle yet.

This will be our (Betty's and my) last raffle. In the parlance of the Electric Industry, it is time for some 'load shedding'. I find that I have TOO much to do and TOO little time to do it and NO time for myself. I will be happy to help anyone who wishes to take on this rewarding (but demanding) job however I can, short of doing it.

Again, thanks to everyone who has helped in any way over the past few years, but especially to those of you have 'taken that chance'.



Society News

Alison Marie Gowdy

Alison Marie Gowdy, daughter of NJLHS founder Jim Gowdy and wife Ingrid, died of cancer on July 1, 2000. She was 13 years old. Jim is a well-known lighthouse historian and author of *Guiding Lights of the Delaware River and Bay*. Alison was a frequent companion on Jim's lighthouse trips and very much daddy's little girl. Needless to say the family has been devastated by her death. Memorial contributions may be made to the Alison Gowdy Scholarship Fund, Batsto-Pleasant Mills United Methodist Church, 5213 Pleasant Mills Road, Sweetwater, N.J. 08037-4109.

Autumn in Annapolis

NJLHS is sponsoring a 7-hour cruise on the Chesapeake Bay on October 28, 2000. We will be sailing on the *Annapolitan II*, a 65-foot motor yacht leaving from the Annapolis City Dock. The cruise will be from 9:30 a.m. to 4:30 p.m. and we will be able to see five lighthouses: Thomas Point, Sharps Point, Bloudy Point, Baltimore Light and Sandy Point. The cost is \$48.00 per person and includes a box lunch and beverage. No food or beverages may be brought on board. Transportation to the dock is not provided. The trip is first-come, first-served. Reservations must be received by September 28th. A registration form with lunch choices is included in this issue of *The Beam*.



NJLHS Board Meeting

The next NJLHS Board Meeting will be held on October 21, 2000 at Twin Lights.

NJLHS Web site featured

The NJLHS Web Site was featured as the Site of the Day by southjersey.com, on August 15, 2000.

Volunteers needed for NJLHS Outreach

Volunteers are needed for an upcoming outreach program at Island Beach State Park on September 17, 2000. It's the 3rd Annual Beach Plum Festival. Tables can be setup beginning at 6:00 a.m. but vehicles must be removed from the display area by 8:00 a.m. The event is being held from 9:00 a.m. to 4:00 p.m. at OBA1 (Ocean Bathing Area 1). The event is sponsored by the Friends of Island Beach State Park. For more information you can visit their web site at community.nj.com/cc/friendsofisp. Contact Yvonne Miller of NJLHS if you would be interested in participating for NJLHS.

Lighthouse 2000 Event

Brochures have been distributed to the 9 NJ Department of Tourism sites. The brochure is also available on the NJLHS web site.

Newsletter Task Force

At the May NJLHS Board of Directors Meeting, a task force was appointed to address spreading the work load in the publishing of *The Beam*. After three meetings, the following tasks have been accomplished.

- The mailing list for membership and the newsletter will be maintained by the Membership Chairperson, Mary Beth Dougherty.
- This issue (September) will be printed and prepared for mailing by the company that prints the newsletter. This is a trial run to establish feasibility and cost for this task. If cost is prohibitive, it may be necessary to call for volunteers to prepare the quarterly mailings.
- Kim Ruth, Editor, will be joined by Joe Guchek in editing and laying-out *The Beam*. As a result, articles & photos for *The Beam* should be sent to Joe Guchek at 16 Labakan Drive, Highland Park, NJ 08904. E-mail articles to njlhsbeam@prodigy.com.

In addition, reporters for *The Beam* are requested. Anyone interested contact Kim or Joe at the meeting or to the above address/e-mail. We trying to develop a group of people that will keep in contact with the various lighthouse organizations in this state and elsewhere and report periodically on projects and other activities of the groups for *The Beam*.



Jack Slavin, Debbie & Harry Megonigal, Ruth & Steve Martorano manning the NJLHS outreach tent at the East Point Lighthouse during Bay Day.
Photos by Steve Martorano.



CLASSIFIED AD HELP WANTED

M/F, 18 to 80 and older, GREAT P/T position! Do you like people? Lighthouses?

Come join us! We can help you marry the two into an interesting opportunity to meet new people and talk about lighthouses!

DON'T WAIT! CALL NOW! 856-546-7810 or 732-872-2966. You won't be sorry!



Notes from Near & Far

"Shore Excitement"

The new New Jersey Lottery game "Shore Excitement" features New Jersey Lighthouses. The tickets are two dollars and you have two chances to win on each ticket. Match three identical symbols and win the prize in the prize box, or match 3 like prize amounts and win that amount. Proceeds benefit Education and Institutions.

New Lighthouse Post Card

by Joan Walton

Have you seen the "new" lighthouse postcard? Actually, it was released some time last year. When I found it a few months ago I called Howard Koslow, the artist who I thought designed it, to commend him on the beautiful art work. (Some of you will remember that Howard was our guest speaker at our Summer Meeting in June 1998, at Liberty State Park, and the creator of the two sets of lighthouse stamps released a few years ago). He thanked me, but said that it was not his work but that of a friend, Wendell Minor, from Connecticut. I wrote to Wendell Minor and he sent me information on his work. It was a surprise because he had completed the artwork several years before and was not aware of the publication and release of the postcard. Wendell is the illustrator of such children's books as *Sierra, Mojave and Everglades. The Grand Canyon* was the first book he both wrote and illustrated. Other works which he has illustrated are: *Heartland*, with author Diane Siebert, *Everglades and Artisan* with author Jean Craighead George. He has also illustrated the Scribner's Classic edition of Jack London's *Call of the Wild*.



U.S. Postal Service's new 20¢ post card featuring the Block Island Southeast Lighthouse.



Wendell Minor
of Washington, Conn.

The postcard features the Block Island Southeast Lighthouse, which was first put into operation February 1, 1875, and was equipped with a first-order Fresnel lens which cost \$10,000. In 1990, the Coast Guard deactivated the light and used an automated steel tower. The lighthouse was built more than 300 feet from the edge of the bluffs and in the early 1990's it was only 55' from destruction when it was listed as one of the most endangered lights by the National Trust for Historic Preservation. Volunteers and the Foundation raised funds

to move the light 245 feet to safety. The lens was relighted August 27, 1994. Dedication of the postcard took place on July 24, 1999, "paying tribute to this historic landmark and recognizing the spirit of the people who raised the necessary funds to save the lighthouse from years of soil erosion," according the Deborah K. Willhite of the U.S. Postal Service, who dedicated the stamped postal card. It was designed by Derry Noyes of Washington, D.C., and illustrated by Wendell Minor of Washington, Connecticut.

Absecon Keeper's House Construction to Begin

Construction is expected to begin soon on rebuilding the keeper's house at the Absecon Lighthouse. The construction is made possible by a low-interest loan from the CRDA (Casino Re-Development Authority). Landscaping is expected to begin in the Fall.

18th Annual Ocean County Decoy and Gunning Show at Tuckerton Seaport Needs Volunteers

Tuckerton Seaport is looking for volunteers to help them at their upcoming Decoy Show, the 23rd and 24th of September, from 7:00 a.m. til 5:00 p.m. If you are interesting in volunteering for this event or at the seaport, contact Trish or Nicole in the Interpretative Program Office at (609) 296-1623.

6th Annual Dinner/Reunion of DBLHKFA

The 6th Annual Dinner/Reunion of the Delaware Bay Lighthouse Keeper's & Friends Association will be held on October 7, 2000, at the Riverview Inn in Pennsville, New Jersey. Noted lighthouse author Elinor De Wire will be the featured speaker. The cover of her book, *Guardians of the Lights*, has a picture of Stephen Jones, who was a keeper on the Harbor of Refuge Lighthouse in 1962.



The Beam

The Beam welcomes submissions of a non-commercial nature. Electronic submissions can be sent to njlhsbeam@prodigy.com. Typed and hand written submissions can be sent to Joe Guchek at 16 Labakan Drive, Highland Park, NJ 08904. The deadline for inclusion in the December issue is October 18, 2000.



Program Signals

by Yvonne Miller

The Fall Meeting of the NJLHS will be held at 12:00 noon on SEPTEMBER 16, 2000 at the Theatre in Gateway National Recreation Area (Sandy Hook) at Fort Hancock, New Jersey. Please go to the Theatre; if it is not completed, the meeting will be held in the Auditorium across from the Theatre.

The meeting time and agenda for the meeting has been changed in order to allow special tours of the Sandy Hook Lighthouse for NJLHS members. The special TOURS will begin at 9:00 a.m., with the last tour going up at 11:30 a.m. Members interested in taking tours should report to the Sandy Hook Lighthouse at 8:45. Please bring your membership card and/or your official NJLHS nametag for admittance to the lighthouse.

Regular MEMBERSHIP registration will take place at the meeting place. Registration of new members and sign up for new members taking the tour will take place at the lighthouse.

HOSPITALITY will not be served at this meeting but coffee, tea and lemonade will be available starting at 11:00 a.m. for those wishing to have their lunch prior to or during the meeting.

Our SPEAKER for the day will be from the U. S. National Lighthouse Museum. This is the Annual Lighthouse Sweatshirt/Tee-shirt Contest. Prizes will be awarded for the Most Original, Best Handcrafted and From the Longest Distance.

DIRECTIONS: From the North take Garden State Parkway South to Exit 117 to Route 36 and follow signs to the Fort Hancock and Sandy Hook National Parks. From the South take GSPKY to exit 105 follow to Route 36 East and then North to the Sandy Hook National Park and Ft. Hancock.

Upcoming Meetings:

The DECEMBER 2, 2000 Winter Meeting will be held in the Cape May area. The Cape May lighthouse will be open and members with their name tags and/or membership cards will be permitted free entrance after the meeting. The schedule of the NJLHS 2001 meetings will be printed in the next issue of *The Beam*.

Summer Meeting Recap:

Two hundred forty members and guests attended the 10th Anniversary Meeting at the TUCKERTON SEAPORT, Tuckerton, NJ, on June 24, 2000. A Preservation Fund check was presented to the staff of the Seaport. Many members enjoyed the buffet lunch which was good and plentiful. Members were given free access to tour the Seaport including the lighthouse. Our Ways & Means sales were bountiful. Harry Megonigal asked me to especially thank all of those who gave him a hand with the Door Prizes and 50/50's. Pat Brooks and Dixie Amento are always there giving Harry a hand, but there were so many others I don't want to offend anyone by forgetting a name. To all of you, Harry says, "Thanks." In addition, Carole Reily expressed her appreciation to Linda Pierson and several other members for assisting her in setting up and breaking down her table, not to mention the generous sales she experienced that day. The Annual Lighthouse Preservation Raffle lived up to its 10th Anniversary billing. Lighthouse people are really nice!

The Beam, the official journal of the New Jersey Lighthouse Society, Inc., is published quarterly, March, June, September and December. Membership dues are \$15.00 single and \$20.00 family, and are for the calendar year. Back issues are available free for members joining mid-year. All materials are copyrighted and cannot be borrowed or reproduced without permission of the New Jersey Lighthouse Society. The NJLHS - New Jersey Lighthouse Society, Inc., - is a non-profit educational corporation (501c3).

Officers and Board Members

President	Tom Laverty	(732) 872-2966
1st Vice President	Yvonne Miller	(609) 654-2451
2nd Vice President	Steve Martorano	(609) 456-3281
Secretary	Judy Swiencki	(973) 543-7281
Corres. Secretary	Betty Smith	(609) 546-7810
Treasurer	Debby Megonigal	(609) 268-0779
Board Member	Mary Beth Doherty	(973) 966-5573
Board Member	Rick Weber	(973) 328-3615
Board Member	Ray Vliet	(732) 985-2624
Board Member	Bill Volpe	(732) 846-2196
Board Member	Al Smith	(609) 546-7810

Committees

Activities Chair	Carole DiNapoli	(732) 297-4280
Historian	George Feirer	(609) 628-2210
Hospitality Chair	Betty Smith	(609) 546-7810
Membership Chair	Mary Beth Doherty	(973) 966-5573
Newsletter Editor	Kim M. Ruth	(609) 386-4296
E-mail:	kruth@burlco.lib.nj.us	
Submissions	Joe Guchek	
	njlhsbeam@prodigy.com	

Program Chair	Yvonne Miller	(609) 654-2451
Publicity Chairs	Richard & Elinor Veit	(609) 652-1876
Ways & Means	Steve Martorano	(609) 456-3291

Society Address:
NJLHS, Inc.
P.O. Box 4228
Brick, NJ 08723

Newsletter Address:
The Beam
16 Labakan Drive
Highland Park, NJ 08904

Web Site:
E-mail address:

<http://njlhs.burlco.org>
njlhs@burlco.org